

WINTERIZING A FIBRO POOL

Sand or glass system

It is important to follow these instructions to ensure the pool's proper functioning and durability.

Basic rule: NEVER EMPTY YOUR POOL without the manufacturer's authorization, because of the possible water pressure under the pool. If not, the warranty will no longer be in effect.

The water level in the draining well **must** be checked before reducing the water level in the pool. The draining well must always be at least 2 feet (66 cm) lower than the water level in the pool. It is important to consider in the calculations the decrease in the pool's water level (5 inches (13cm) below the opening of the skimmer) for the closing as illustrated below. There must always be more water in the pool than in the groundwater; this principle is valid for concrete or vinyl swimming pools.

Important: if your swimming pool is closed and there is a lot of precipitation, check the draining well again. If necessary, empty the well with a submersible pump. Never reduce water level in the pool after it has been closed, without checking the draining well beforehand.



draining well

5" pcs (13 cm)

Necessary items:

- Mop
- Vacuum cleaner that blows and sucks air (Shop Vac) or compressor
- Winterizing kit (supplied at the time of purchase)
- 8 litres of biodegradable antifreeze
- Right-handed screwdriver
- Leaf net (needed to facilitate the pool's opening. Without this net, the leaves settle to the bottom and may stain the swimming pool).



Kit



Fall net



Winter tarp

Make sure the water chemistry is balanced: before closing the swimming pool, it is important to balance the water to avoid the appearance of stains and tartar.

- Vacuum the pool
- Purchase a chemical winterizing kit



WINTERIZING A FIBRO POOL

Steps to follow:

1. Important: Check the draining well before emptying the pool.(img.1)



2. Reduce the water level to 5 inches (13 centimetres) below the skimmers opening (img.2). The pool's water level should be below the return jets (img.3).



3. In order to do so, place the level (img.4/red) of the skimmer's valve (img.5) to the horizontal position (img.4/black) and turn the white lid above the valve's top vent (img.4/blue).



4. Connect the backwash hose to the filtration system and lay it out toward the street to prevent the water from returning to the pool (img.6).



5. Place the valve of the pump's lever in Waste position (img.7).



6. Let the garden hose slightly flow into the skimmer (img.8). This step prevents the pump from drying up when the water level is lower than the skimmer's opening.



7. Once the pool's water level has been lowered, disconnect the electrical supply from the pump.

8. Empty your filter's tank by unscrewing the plug at its base ([img.9](#)). Then, remove the sight-glass and its "gasket" ([img.10](#)) at the top of the filter ([img.11](#)) as well as the gauge ([img.12](#))

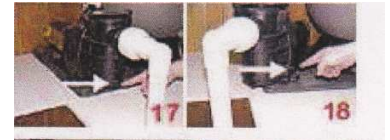


** For those with a permanent backwash pipe. To empty the pipe, put the lever at the top of the filter in the Closed position ([img.13](#)), then blow air from the opening of the sight-glass ([img.14](#)).

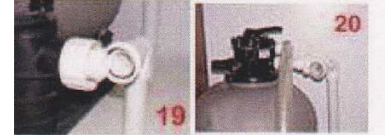


8.1. Put the lever at the top of the filter in the **Winter** position ([img.15](#)). Then, cover the top of the filter to protect it against winter weather ([img.16](#)).

9. Remove the 2 drain plugs from the bottom of the pump ([img.17-18](#)).



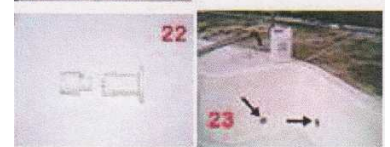
10. Detach the suction pump ([img.19](#)) and the filtration system's return lines ([img. 20](#)).



11. Remove the valve from the skimmer by unscrewing the 2 screws ([img.21/purple](#)).



12. With your jet tools, unscrew the pool's return jets ([img.22-23](#)), as well as the spa jets.



13. Shut the air controls ([img.24](#)) on the side of the pool, if necessary.



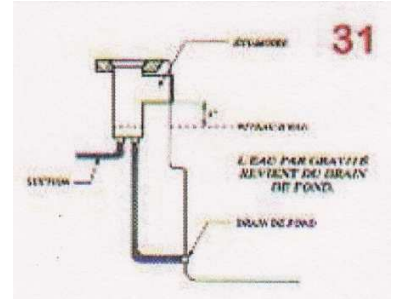
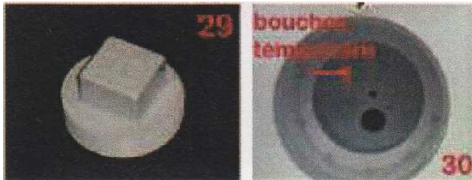
14. With a Shop-Vac or air compressor, blow air into both plumbing lines from the filter system to the pool ([img.25](#)). Place the air relief valve's lever to the "Pool" position and blow air until all the water is purged from the 3 return jets located inside the pool and from the single return jet inside the spa. (Please note, if applicable, you must drain the water from all accessories at this point (waterfall, solar system, heater). All valves connected to each of your options must be opened in order for the purging process to take place).



15. Once all the water has been purged, the return lines can be capped (img.26) with threaded plugs or expandable rubber plugs (img.27) depending on your pool's type of jets. Then, reopen the air controls (img.28) on the edge of the pool, pour in 3 litres of antifreeze and shut the air controls.



16. Before purging the suction lines, place a **temporary** 2" threaded plug in the skimmer (img.29). You must place the plug in the hole that is closest to the pool (img.30), this opening is connected to the bottom drain (img.31). This procedure prevents gravity from causing the water to return to the skimmer, thus avoiding draining the bottom of the skimmer.



17. Blow and suck the air until the water no longer passes through the mouth of the skimmer (img.32). With a mop, dry the remaining water from the suction opening of the skimmer (img.33). Finish this step by pouring 1 litre of antifreeze into the skimmer (img.34).

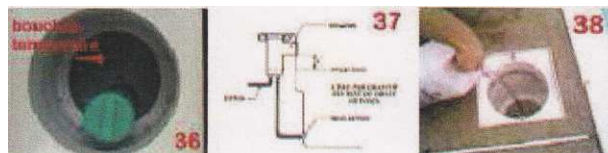


18. Screw the Gizzmo (type of green bottle) with the expandable teflon (img.35)

In the suction opening of the skimmer (the hole that is furthest from the pool (img.36) and NOT the opening from the bottom drain.



19. Remove the 2" threaded plug that was inserted in step 16. (img.36) It is normal that gravity caused the water to return to the skimmer. (img.37) Pour approximately 4 litres of antifreeze into the skimmer until coloured antifreeze comes out of the pool's bottom drain (img.38).



Hayward DEL light

20. Unplug the breaker. Remove the front screw (img.41) remove the light and place it on the sidewalk. Secure the light so it will not fall into the pool during winter, then cover the light with a bag. Insert a piece of Styrofoam into the housing of the light, inside the pool. (img.42)



DEL light

21. Unplug the breaker. The light remains in the water for the winter. No manipulation needed.

Fibre optic light

22. Shut the electrical power from the optical fibre light (if applicable) and cover to protect it winter weather (img.50)



23. Install a leaf net if necessary.

*****Please note**, the pump may be brought inside during the winter. However, please make sure to cover the line openings that have been disconnected to prevent water from infiltrating your pipes.

24. Important: If your pool is closed and there is a lot of precipitation, check the draining well again. If necessary, empty the well with a submersible pump (submersible pump with a vertical float and no cable).

Never decrease the pool's water level after it has been closed, without checking the draining well first.